

14.0 Warranty

- 14.1 The warranty period commences on the date of original purchase of the equipment. Evidence of this date of original purchase must be provided when claiming repairs under warranty. It is recommended you retain all receipts in a safe place.
- 14.2 Shah Pneumatics products are warranted to the original user only to be free of defects in material and workmanship for a period of 12 months from date of manufacture. Shah Pneumatics' liability under this warranty shall be limited to repairing or replacing at Shah Pneumatics' option, without material charge however we may levy service charges, FOB Shah Pneumatics' Mumbai distribution center or authorized service agent. Shah Pneumatics will not be liable for any costs of removal, installation, transport or any other charges that may arise in connection with the warranty claim.
- 14.3 This warranty is subject to due compliance by the original purchaser with all directions and conditions set out in the Installation and Operating Instructions. Failure to comply with these Instructions, damage or breakdown caused by fair wear and tear, negligence, misuse, incorrect installation, inappropriate chemicals or additives in the water, inadequate protection against freezing, rain or other adverse weather conditions, corrosive or abrasive water, lightning or high voltage spikes or through unauthorized persons attempting repairs are not covered under warranty.
- 14.4 Shah Pneumatics shall not be liable for any loss of profits or any consequential, indirect or special loss, damage or injury of any kind whatsoever arising directly or indirectly from the product or any defect, and the purchaser shall indemnify Shah Pneumatics against any claim by any other person whatsoever in respect of any such loss, damage or injury.
- 14.5 This warranty applies to all states and territories of India only.
- 14.6 For effective warrantee, user must produce copy of invoice / warrantee page / card.
- 14.7 No warrantee will be given if the above conditions are not met with the decision of Flowmatics/Shah Pneumatics in relation of any claims or dispute over the warrantee is final.

Shah Pneumatics has a continuous policy of product development and although the Company reserves the right to change specifications, it attempts to keep customers informed of any alterations. This publication is for general information only and customers are requested to contact our Sales Department for detailed specifications and advice on a product's suitability for specific applications. All products are sold subject to the Company's standard conditions of sale.

Flowmatics is a trademark of Shah Pneumatics

WATER MANAGEMENT SYSTEMS

Shah Pneumatics

Regd. Office: 28-30 Navketan Indl. Estate, Mahakali Caves Road,
Andheri (East), Mumbai- 400 093. INDIA.
Telephone: +91-22-6695 1090-94. Facsimile: +91-22-2687 5317
Email: shahpneu@bom3.vsnl.net.in
Website: www.shah-pneumatics.com

FOR DISTRIBUTOR STAMP

101 HORIZONTAL STAINLESS STEEL CLOSED IMPELLER PUMPS - PB

Flowmatics™
WATER MANAGEMENT SYSTEMS



**PB
SERIES**

**HORIZONTAL STAINLESS STEEL
CLOSED IMPELLER PUMPS**

INSTALLATION OPERATION & MAINTENANCE MANUAL

DEALER: This manual must be given to the user of the pump

USER: Before using this pump, read this entire manual and
save for future reference



For more information regarding Flowmatics products,
parts & services, please visit www.shah-pneumatics.com

WARNING:

1. Periodic inspection and maintenance of pumps is essential
2. Transfer of toxic, dangerous, flammable or explosive substances using Flowmatics products is at user's risk
3. Inspection, maintenance & installation of pumps must be made only by experienced, trained & qualified personnel
4. Use of strainer in the suction of the pump is a must for ensuring longer life of pump

TABLE OF CONTENTS

1.0	Features	3
2.0	Applications	3
3.0	Model Ordering Code Instructions	3
4.0	Working Conditions	3
5.0	Outline Diagram & Dimensions	3
6.0	Installing the Pump	4
7.0	Pump Electrical Connection	4
8.0	Starting, Operating and Stopping the Pump	4
9.0	Maintenance	4
10.0	Attention	5
11.0	Troubleshooting	5
12.0	Part Explosion Diagram	6
13.0	Maintenance Record	7
14.0	Warranty	8

Congratulations for your purchase of Flowmatics pump/products.

We appreciate your trust while opening / unpacking the product, make sure that there is no transit damage, if any, it must be reported to the dealer.

We take no responsibilities in the case of accidents or damages on the basis of carelessness or disregard to the instructions and reject every responsibilities for the damages which originate from the improper use of the pumps.

The purchaser must correctly fill in and mail the last page within 10 days from the date of purchase. No warrantee will be given for incomplete warrantee.
(provide invoice no./ date / dealers name & address with stamp & signature on last page.)

IOM HORIZONTAL STAINLESS STEEL CLOSED IMPELLER PUMPS - PB

13.0 Maintenance Record**Purchase Details**

Date of Purchase :

From: Name :

Address :

Tel. No. :

Fax No. :

Pump Details

Pump Model No.:

Pump Connection :

Installation Details

Date of Installation :

Location :

Strainer Details

Estimated Date of Strainer Cleaning :

Estimated Date of Strainer Change :

Bill No. :

Bill Date :

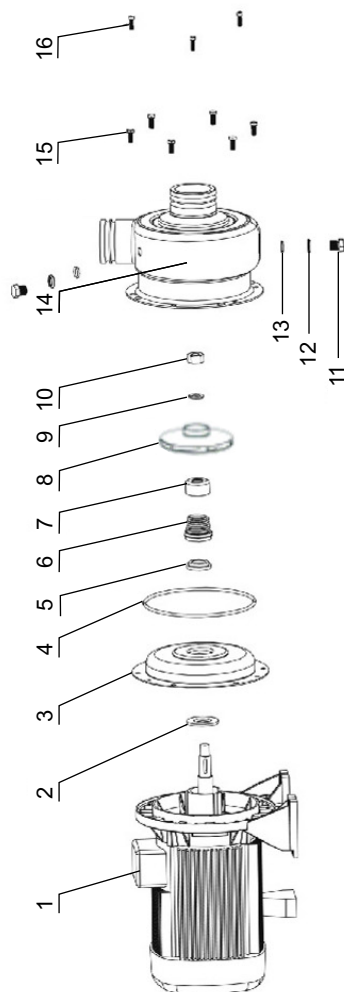
Serial No :

Manuf. Date :

DEALER STAMP

IOM HORIZONTAL STAINLESS STEEL CLOSED IMPELLER PUMPS - PB

12.0 Part Explosion Diagram



No.	Part Name	No.	Part Name	No.	Part Name
1	Motor	5	Stationary Ring	9	Washer
2	“V” Slinger	6	Rotary Ring	10	Impeller Nut
3	Back Cover	7	Mech. Seal Carrier	11	Priming/Drain Bolt
4	“O” Ring	8	Impeller	12	“L” Washer
				13	“O” Ring
				14	Casing
				15	Screw
				16	Screw

IOM HORIZONTAL STAINLESS STEEL CLOSED IMPELLER PUMPS - PB

1.0 Features

The PB Horizontal Stainless Steel Closed Impeller Pumps are manufactured in AISI 304 Stainless Steel sheets by using stamping and welding technologies, where casing, backcover, impeller & pump shaft are made from SS304, mechanical seal is used as the shaft seal, which make the pumps have the features of light weight, graceful appearance, material saving, and high efficiency.

2.0 Applications

The pumps are suitable for transporting clean water and industrial media which are non-aggressive to stainless steel AISI 304, such as transporting clean water/glycol/light corrosive fluid, washing/ irrigation systems, pools, fountains & filtration systems.

3.0 Model Ordering Code Instructions

PB - 300 - 1.50 - D



Series
PB - Horizontal
Closed
Impeller
Pump

Operating Flow
300 - 300 l/min
500 - 500 l/min

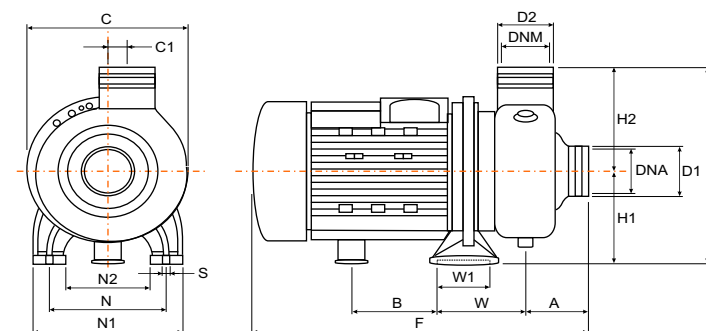
Motor Power
0.75 - 0.75 kW
0.90 - 0.9 kW
1.10 - 1.1 kW
1.50 - 1.5 kW
2.20 - 2.2 kW
3.00 - 3.0 kW

Phase
D - Single
Blank - Three

4.0 Working Conditions

- 4.1 Ambient temperature +40 °C max.
- 4.2 Maximum working temperature: -15 °C ~ +80 °C
- 4.3 Maximum working pressure: Upto 8 kg/cm²g
- 4.4 Maximum suction head: 8 metres

5.0 Outline Diagram & Dimensions



Model	Dimensions (mm)																
	A	B	C	C1	F	H	H1	H2	N	N1	N2	S	W	W1	D1	D2	DNA
PB300/0.75	74.5	90	170	20	358	226	108	118	120	160	80	9	84	52	52	52	38(1½")
PB300/0.9	74.5	90	170	20	358	226	108	118	120	160	80	9	84	52	52	52	38(1½")
PB300/1.1	82	74	193	20	364	253	120	133	140	180	100	9	100	52	63	63	50(2")
PB300/1.5	82	74	193	20	364	253	120	133	140	180	100	9	100	52	63	63	50(2")
PB500/1.5	82	74	193	20	364	253	120	133	140	180	100	9	100	52	63	63	50(2")
PB500/2.2	82	65	193	20	390	253	120	133	140	180	100	9	100	52	63	63	50(2")
PB500/3.0	82	65	193	20	390	253	120	133	140	180	100	9	100	52	63	63	50(2")

IOM HORIZONTAL STAINLESS STEEL CLOSED IMPELLER PUMPS - PB

6.0 Installing the Pump

- 6.1 Check the pump input voltage is identical to the one on the nameplate. Max voltage fluctuation $\pm 5\%$
- 6.2 Seat the pump on a level place, as close to the source of water as possible. Away from Children's reach.
- 6.3 In avoiding any damage of internal parts, check and tighten any possible loose tightening-parts and remove any possible foreign particles inside the pump body prior to installation.
- 6.4 Connections of pipe work must be sealed properly, poor sealing on the pipe work may cause air-leak and give bad performances.
- 6.5 When pumping water from a lower source, fix a non-return foot valve at the send of suction hose to avoid water draws back when stopping pumping.
- 6.6 Hold the pipe work with supports, the pump should not stand the weight of pipe work.
- 6.7 Pump should be effectively earthed, or provided with a creepage breaker.
- 6.8 Inlet diameter of the pipe must never be smaller than that of outlet pump connection.

7.0 Pump Electrical Connection

- 7.1 Check voltage, frequency and phase of power source are identical to the corresponding data on the pump nameplate.
- 7.2 A wiring diagram can be seen inside the cover of terminal box. The pump must be effectively earthed in accordance with local electric regulations. It is recommended that earth-leakage protection be provided by connection of a residual current circuit breaker.

8.0 Starting, Operating and Stopping the Pump

- 8.1 Run the motor fan by hand to check whether pump is running freely and quietly. Start up the pump for a second to check the rotational direction, the correct way is always in clockwise when viewing the motor fan from the motor end.
- 8.2 Switch open the suction valve, remove the priming plug on the top of the pump casing and fill the pump body with water till it overflows, then put the plug on and tighten it up. Never run the pump dry, it would cause serious damages of internal parts.
- 8.3 Start up the pump and set the discharge valve to control the pressure to the required duty point.
- 8.4 When stopping pumping, close the discharge valve and switch off power.
- 8.5 Frequent start-up and stop of pump or prolonged operation of pump with the discharge valve closed may cause damage.
- 8.6 If the pump is to remain inactive for a long period, empty it completely and wash it with clean water, to prevent breakage of the pump body when there is a risk of frost.
- 8.7 If strange noises make by the pump are hard, stop pumping and check the causes.

9.0 Maintenance

- 9.1 Make sure the power is shut off before maintenance.
- 9.2 Maintenances of the splined shaft and shaft seal are not necessary.
- 9.3 When the temperature of the transported liquid is lower than its freezing temperature, make sure the liquid is not frozen inside the pump before starting the pump. During frost season, always drain the pump completely after using the pump.
- 9.4 Under normal working condition pumps requires no servicing until 2000 hrs of operation.

10.0 Attention

- 10.1 It is strictly forbidden to operate the pump without water inside the pump body.
- 10.2 Avoid frequent starting and stopping of the pump. Switch off the pump if the power is interrupted.
- 10.3 It is forbidden to control capacity by setting the valve on the suction pipe.
- 10.4 Switch off power when the pumped water is interrupted or there is lack of water.
- 10.5 If strange noise made by the pump are heard, stop pumping immediately and check the cause.
- 10.6 When the pump is to remain inactive for a long period, drain the water from the pump body by unscrewing the draining plug and filling plug. Wash the pump body with clean water and make sure the pump body is completely drained to avoid breakage by frozen water in winter times.

11.0 Troubleshooting

Type of fault	Cause	Remedy
Pump can not start up.	1. No electric power. 2. Wrong electric connection. 3. Motor shaft blocked. 4. Stuck mechanical seal faces. 5. Damaged motor or bearing.	– Check and correct wiring in the terminal box. – Clean it up. – Run the shaft by hand to split them. – Repair or replace motor or bearing.
Pump can not lift water or insufficient capacity.	1. Voltage drops. 2. Motor runs at wrong. 3. Pump not filled with water. 4. Too great resistance of pipe work system. 5. Foot valve blocked. 6. Air-leak on suction pipes. 7. Too great suction height. 8. Too low water level.	– Correct wiring in the terminal box. – Fill up pump body with water. – Check the rationality of pipe work. – Clean the foot valve. – Seal the leakage. – Place pump on a lower position. – Stretch pipe into water.
Insufficient head	1. Vaporloss 2. Damaged impeller.	– Lower water temperature – Replace impeller.
Over current (overload)	1. Damaged ejector Blocked impeller to run. 2. Damaged bearing.	– Replace ejector. – Replace bearing.
Vibration and noise	1. Wrong connections of pipes. 2. Damaged bearing. 3. Motor fan blocked.	– Correct the connections. – Replace bearing. – Clean it up.