

PVA- 151 to 153

SANITARY STERILE AIR/GAS/ STEAM FILTER VESSEL

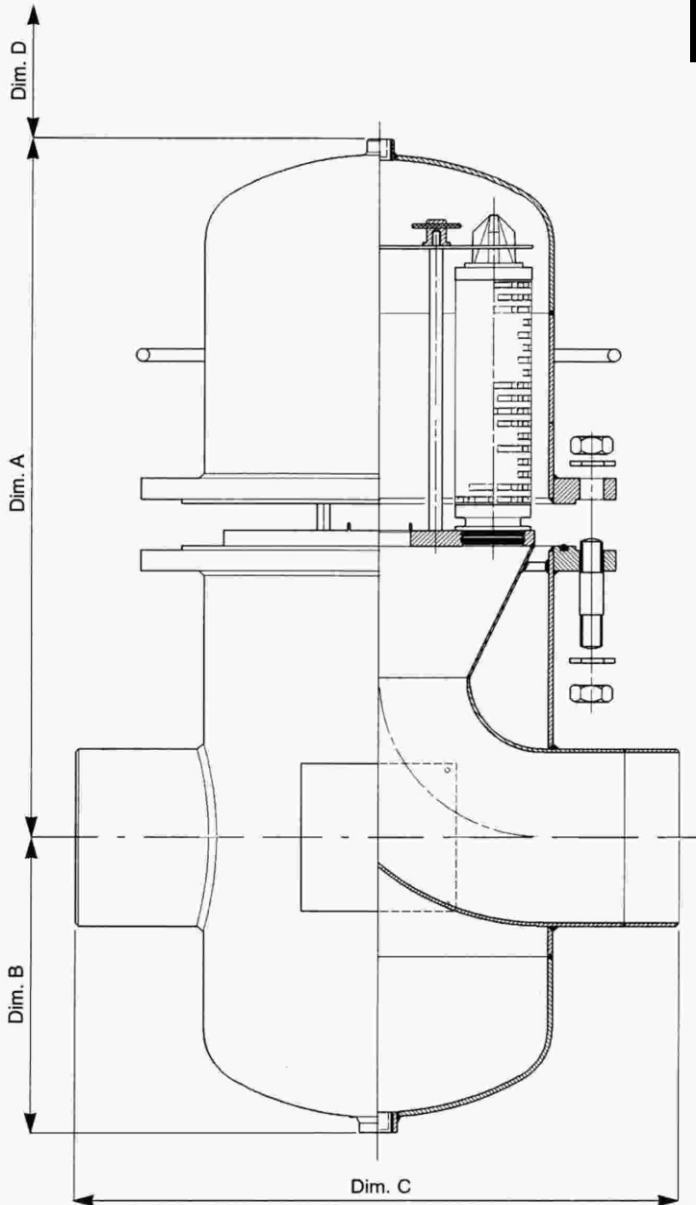
DESIGN DATA

Material : 316 Stainless Steel
 External Finish : Mechanically mirror polished
 Internal Finish : Electropolished (0.6 M)
 Design : Generally in accordance with
 ASME VIII Div.1 (1989)
 Vessel Closure : ANSI B16.5 / 150 lbs
 Housing seals : Silicon

Maximum Operating Conditions :
 Pressure : 7.0 kg/cm²
 Temperature : 145 °C

N.B.

Vent/Drain valves must be ordered separately.



Vessel Code	No.&Size of Cartridge Fitment	Connections			Dimensions (mm)				Approx. Weight (kgs)
		Inlet / Outlet	Vent	Drain	A	B	C	D	
PVA-151-HWE	15x250 (10")	200 (8") Weld	15mm (1/2") BSP	20mm (3/4") BSP	735	335	700	350	156
PVA-152-HWE	15x500 (20")	200 (8") Weld	15mm (1/2") BSP	20mm (3/4") BSP	980	335	700	600	172
PVA-153-HWE	15x750 (10")	200 (8") Weld	15mm (1/2") BSP	20mm (3/4") BSP	1230	335	700	850	188

ProAir

Shah Pneumatics

28-30, Navketan Industrial Estate,
 Mahakali Caves Road, Andheri (East),
 Mumbai 400 093 INDIA
 Tel : +91-22-66951090
 Fax : +91-22-26875317
 email : shahpneu@bom3.vsnl.net.in
 website : www.shah-pneumatics